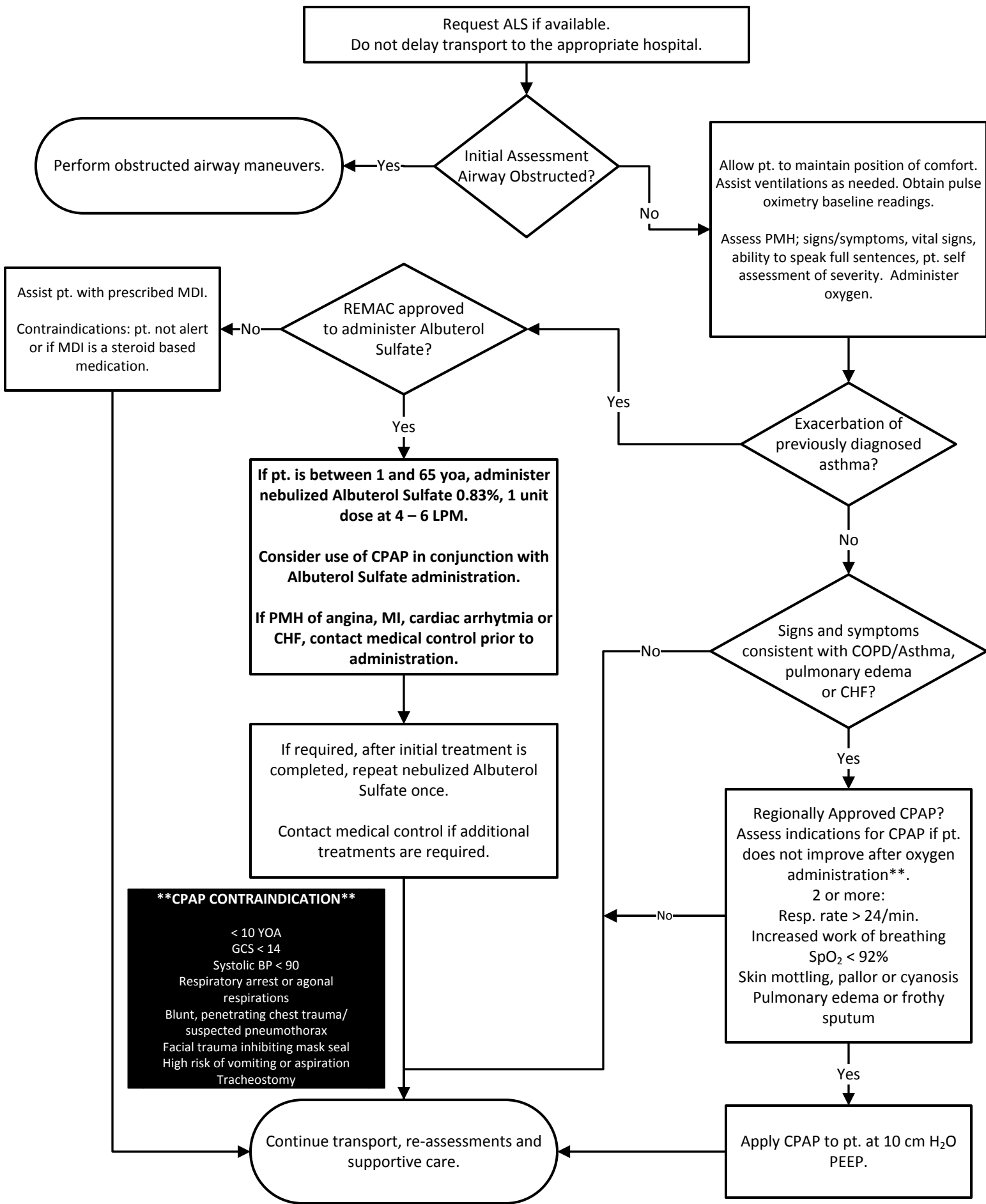


Adult Respiratory Distress

(non-traumatic/non-pneumothorax)



****CPAP CONTRAINDICATION****

- < 10 YOA
- GCS < 14
- Systolic BP < 90
- Respiratory arrest or agonal respirations
- Blunt, penetrating chest trauma/suspected pneumothorax
- Facial trauma inhibiting mask seal
- High risk of vomiting or aspiration
- Tracheostomy